

概況

上昇及び下落している主な項目(寄与度順)

(1) 11月の総合指数は平成27年を100として102.0となり、前月比は(-)0.1%の下落、前年同月比では(+)0.9%の上昇となった。  
 対前年同月比の動きを見ると8月は(+)1.6%、9月は(+)1.4%、10月は(+)1.3%、11月は(+)0.9と推移している。

(2) 生鮮食品を除く総合指数は102.0となり、前月比は(+)0.2%の上昇、前年同月比では(+)1.1%の上昇となった。

(3) 食料(酒類を除く)及びエネルギーを除く総合指数は100.6となり、前月比は(-)0.2%の下落、前年同月比では(-)0.2%の下落となった。

(4) 生鮮食品及びエネルギーを除く総合指数は101.5となり、前月比は(+)0.2%の上昇、前年同月比は(+)0.5%の上昇となった。

○ 前月との比較

| 上昇      |  | (%) | 下落     |  | (%)   |
|---------|--|-----|--------|--|-------|
| 外食      |  | 3.7 | 野菜・海藻  |  | △ 9.1 |
| 穀類      |  | 1.2 | 果物     |  | △ 4.6 |
| 自動車等関係費 |  | 0.3 | 教養娯楽用品 |  | △ 2.1 |

○ 前年同月との比較

| 上昇      |  | (%) | 下落 |  | (%)   |
|---------|--|-----|----|--|-------|
| 自動車等関係費 |  | 3.9 | 通信 |  | △ 3.0 |
| 電気代     |  | 5.6 | 肉類 |  | △ 5.4 |
| 穀類      |  | 6.2 | 家賃 |  | △ 0.7 |

(平成27年=100)

|          | 総合      | 食料      | 住居      | 光熱・水道 | 家具・家事用品 | 被服及び履物  | 保健医療  | 交通・通信 | 教育    | 教養娯楽    | 諸雑費     | 生鮮食品<br>除く総合 | 食料(酒類を除く)<br>・エネルギーを除く<br>総合 | 生鮮食品<br>・エネルギーを除く<br>総合 |
|----------|---------|---------|---------|-------|---------|---------|-------|-------|-------|---------|---------|--------------|------------------------------|-------------------------|
| 平成30年11月 | 102.0   | 103.7   | 100.7   | 102.6 | 96.3    | 102.6   | 104.8 | 100.2 | 105.6 | 102.2   | 102.0   | 102.0        | 100.6                        | 101.5                   |
| 平成30年10月 | 102.2   | 104.1   | 100.7   | 102.2 | 96.8    | 102.9   | 104.8 | 100.1 | 105.6 | 102.7   | 102.1   | 101.8        | 100.8                        | 101.3                   |
| 平成29年11月 | 101.2   | 102.5   | 101.0   | 99.0  | 96.0    | 104.0   | 102.9 | 98.9  | 105.2 | 102.3   | 100.8   | 100.9        | 100.8                        | 101.0                   |
| 対前月比%    | △ 0.1   | △ 0.4   | 0.0     | 0.3   | △ 0.5   | △ 0.3   | △ 0.1 | 0.1   | 0.0   | △ 0.5   | △ 0.1   | 0.2          | △ 0.2                        | 0.2                     |
| (寄与度)    | △ 0.100 | △ 0.105 | 0.000   | 0.031 | △ 0.019 | △ 0.011 | 0.000 | 0.015 | 0.000 | △ 0.044 | △ 0.006 |              |                              |                         |
| 対前年同月比%  | 0.9     | 1.2     | △ 0.2   | 3.6   | 0.3     | △ 1.3   | 1.8   | 1.3   | 0.3   | 0.0     | 1.2     | 1.1          | △ 0.2                        | 0.5                     |
| (寄与度)    | 0.900   | 0.318   | △ 0.058 | 0.281 | 0.012   | △ 0.053 | 0.095 | 0.199 | 0.011 | △ 0.009 | 0.069   |              |                              |                         |

「総務省統計局『小売物価統計調査』の調査票情報を独自集計したものである。」

## 費目別に見た指数の動き

|         | 前月からの動き   | 前年同月からの動き   |
|---------|---|---|
| 食料      | 103.7となり、(-)0.4%下落した。<br>これは、外食(+3.7%等の値上がりはあるものの、野菜・海藻(-)9.1%等の値下がりによるものである。       | 103.7となり、(+1.2%上昇した。<br>これは、肉類(-)5.4%等の値下がりはあるものの、穀類(+6.2%等の値上がりによるものである。         |
| 住居      | 100.7となり、前月と変わらなかった。  | 100.7となり、(-)0.2%下落した。<br>これは、設備修繕・維持(+2.1%の値上がりはあるものの、家賃(-)0.7%の値下がりによるものである。     |
| 光熱・水道   | 102.6となり、(+0.3%上昇した。<br>これは、電気代(+0.5%等の値上がりによるものである。                                | 102.6となり、(+3.6%上昇した。<br>これは、電気代(+5.6%等の値上がりによるものである。                              |
| 家具・家事用品 | 96.3となり、(-)0.5%下落した。<br>これは、家事雑貨(+0.9%等の値上がりはあるものの、家庭用耐久財(-)2.8%の値下がりによるものである。      | 96.3となり、(+0.3%上昇した。<br>これは、家事雑貨(-)1.5%等の値下がりはあるものの、室内装備品(+13.7%の値上がりによるものである。     |
| 被服及び履物  | 102.6となり、(-)0.3%下落した。<br>これは、洋服(+1.3%等の値上がりはあるものの、履物類(-)3.2%等の値下がりによるものである。         | 102.6となり、(-)1.3%下落した。<br>これは、洋服(+0.9%等の値上がりはあるものの、シャツ・セーター類(-)3.7%等の値下がりによるものである。 |
| 保健医療    | 104.8となり、(-)0.1%下落した。<br>これは、保健医療用品・器具(-)0.3%等の値下がりによるものである。                        | 104.8となり、(+1.8%上昇した。<br>これは、保健医療サービス(+2.0%等の値上がりによるものである。                         |
| 交通・通信   | 100.2となり、(+0.1%上昇した。<br>これは、通信(-)0.2%等の値下がりはあるものの、自動車等関係費(+0.3%の値上がりによるものである。       | 100.2となり、(+1.3%上昇した。<br>これは、通信(-)3.0%の値下がりはあるものの、自動車等関係費(+3.9%等の値上がりによるものである。     |
| 教育      | 105.6となり、前月と変わらなかった。  | 105.6となり、(+0.3%上昇した。<br>これは、授業料等(-)0.6%の値下がりはあるものの、補習教育(+1.6%の値上がりによるものである。       |
| 教養娯楽    | 102.2となり、(-)0.5%下落した。<br>これは、教養娯楽サービス(+0.1%の値上がりはあるものの、教養娯楽用品(-)2.1%等の値下がりによるものである。 | 102.2となり、前年同月と変わらなかった。  |
| 諸雑費     | 102.0となり、(-)0.1%下落した。<br>これは、理美容用品(-)0.4%の値下がりによるものである。                             | 102.0となり、(+1.2%上昇した。<br>これは、たばこ(+8.6%等の値上がりによるものである。                              |

消費者物価指数(全国・九州地方)

(平成27年=100)

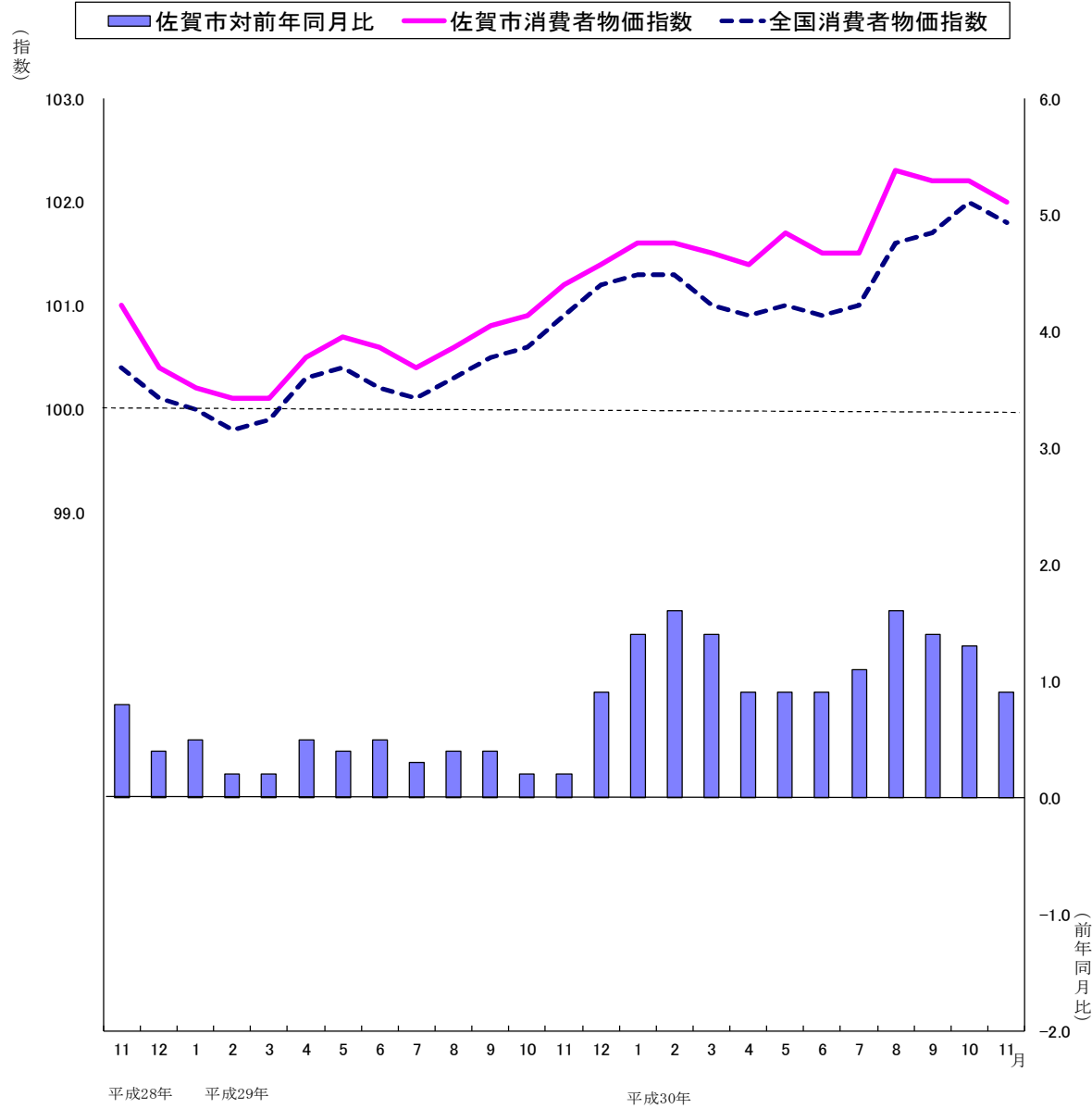
| 平成 30 年11月 |       |         |           |
|------------|-------|---------|-----------|
|            | 総合指数  | 対前月比(%) | 対前年同月比(%) |
| 全 国        | 101.8 | -0.3    | 0.8       |
| 九 州        | 102.2 | -0.3    | 0.8       |
| 九州地方       |       |         |           |
| 福岡市        | 102.1 | -0.1    | 0.7       |
| 佐賀市        | 102.0 | -0.1    | 0.9       |
| 長崎市        | 103.4 | -0.1    | 2.2       |
| 熊本市        | 101.8 | -0.4    | 0.6       |
| 大分市        | 102.3 | -0.4    | 1.0       |
| 宮崎市        | 101.8 | -0.6    | 0.4       |
| 鹿児島市       | 101.5 | -0.3    | 0.4       |
| 那覇市        | 102.7 | -0.1    | 1.2       |

消費者物価指数(総合)

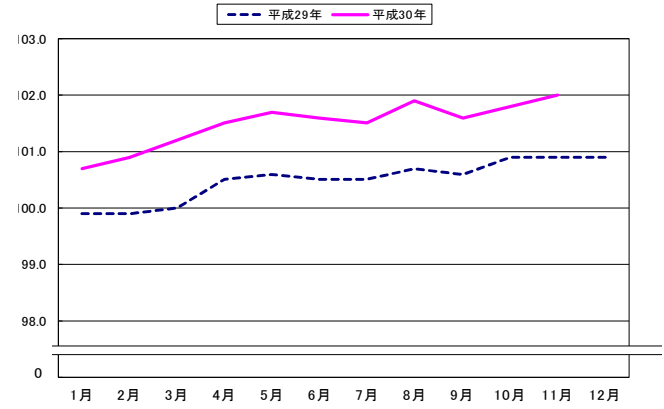
平成27年=100

|           | 佐 賀 市 |      |        | 全 国   |      |        | 九 州   |      |        |
|-----------|-------|------|--------|-------|------|--------|-------|------|--------|
|           | 指数    | 対前年比 | 対前年同月比 | 指数    | 対前年比 | 対前年同月比 | 指数    | 対前年比 | 対前年同月比 |
| 平成 20 年平均 | 98.7  |      | 1.0    | 98.6  |      | 1.4    | 98.1  |      | 1.4    |
| 21        | 98.0  |      | -0.7   | 97.2  |      | -1.4   | 96.9  |      | -1.3   |
| 22        | 97.2  |      | -0.8   | 96.5  |      | -0.7   | 96.3  |      | -0.6   |
| 23        | 96.6  |      | -0.7   | 96.3  |      | -0.3   | 96.1  |      | -0.2   |
| 24        | 96.5  |      | -0.1   | 96.2  |      | 0.0    | 96.0  |      | -0.1   |
| 25        | 96.6  |      | 0.2    | 96.6  |      | 0.4    | 96.3  |      | 0.3    |
| 26        | 99.1  |      | 2.5    | 99.2  |      | 2.7    | 98.9  |      | 2.8    |
| 27        | 100.0 |      | 0.9    | 100.0 |      | 0.8    | 100.0 |      | 1.1    |
| 28        | 100.2 |      | 0.2    | 99.9  |      | -0.1   | 100.3 |      | 0.3    |
| 29        | 100.6 |      | 0.4    | 100.4 |      | 0.5    | 100.8 |      | 0.5    |
|           | 指数    | 対前月比 | 対前年同月比 | 指数    | 対前月比 | 対前年同月比 | 指数    | 対前月比 | 対前年同月比 |
| 平成29年1月   | 100.2 | -0.2 | 0.5    | 100.0 | -0.2 | 0.4    | 100.4 | -0.2 | 0.7    |
| 2         | 100.1 | -0.2 | 0.2    | 99.8  | -0.1 | 0.3    | 100.3 | -0.1 | 0.4    |
| 3         | 100.1 | 0.0  | 0.2    | 99.9  | 0.1  | 0.2    | 100.3 | 0.0  | 0.4    |
| 4         | 100.5 | 0.4  | 0.5    | 100.3 | 0.4  | 0.4    | 100.7 | 0.3  | 0.6    |
| 5         | 100.7 | 0.2  | 0.4    | 100.4 | 0.1  | 0.4    | 100.8 | 0.1  | 0.6    |
| 6         | 100.6 | -0.1 | 0.5    | 100.2 | -0.1 | 0.4    | 100.6 | -0.2 | 0.4    |
| 7         | 100.4 | -0.2 | 0.3    | 100.1 | -0.2 | 0.4    | 100.4 | -0.2 | 0.2    |
| 8         | 100.6 | 0.3  | 0.4    | 100.3 | 0.2  | 0.7    | 100.7 | 0.2  | 0.4    |
| 9         | 100.8 | 0.2  | 0.4    | 100.5 | 0.2  | 0.7    | 101.0 | 0.4  | 0.6    |
| 10        | 100.9 | 0.1  | 0.2    | 100.6 | 0.0  | 0.2    | 101.2 | 0.1  | 0.2    |
| 11        | 101.2 | 0.3  | 0.2    | 100.9 | 0.4  | 0.6    | 101.3 | 0.2  | 0.3    |
| 12        | 101.4 | 0.2  | 0.9    | 101.2 | 0.3  | 1.0    | 101.5 | 0.2  | 0.9    |
| 平成30年1月   | 101.6 | 0.3  | 1.4    | 101.3 | 0.1  | 1.4    | 101.7 | 0.2  | 1.3    |
| 2         | 101.6 | 0.0  | 1.6    | 101.3 | 0.0  | 1.5    | 101.7 | 0.0  | 1.4    |
| 3         | 101.5 | -0.2 | 1.4    | 101.0 | -0.3 | 1.1    | 101.4 | -0.3 | 1.1    |
| 4         | 101.4 | -0.1 | 0.9    | 100.9 | -0.1 | 0.6    | 101.2 | -0.2 | 0.5    |
| 5         | 101.7 | 0.2  | 0.9    | 101.0 | 0.1  | 0.7    | 101.4 | 0.2  | 0.6    |
| 6         | 101.5 | -0.1 | 0.9    | 100.9 | -0.1 | 0.7    | 101.3 | -0.1 | 0.6    |
| 7         | 101.5 | -0.1 | 1.1    | 101.0 | 0.1  | 0.9    | 101.5 | 0.2  | 1.0    |
| 8         | 102.3 | 0.8  | 1.6    | 101.6 | 0.5  | 1.3    | 102.0 | 0.5  | 1.3    |
| 9         | 102.2 | -0.1 | 1.4    | 101.7 | 0.1  | 1.2    | 102.1 | 0.1  | 1.1    |
| 10        | 102.2 | 0.0  | 1.3    | 102.0 | 0.3  | 1.4    | 102.5 | 0.4  | 1.3    |
| 11        | 102.0 | -0.1 | 0.9    | 101.8 | -0.3 | 0.8    | 102.2 | -0.3 | 0.8    |
| 12        |       |      |        |       |      |        |       |      |        |
|           | 指数    |      | 対前年度比  | 指数    |      | 対前年度比  | 指数    |      | 対前年度比  |
| 平成 20年度平均 | 98.8  |      | 1.0    | 98.6  |      | 1.1    | 98.1  |      | 1.1    |
| 21        | 97.8  |      | -1.0   | 96.9  |      | -1.7   | 96.7  |      | -1.5   |
| 22        | 97.0  |      | -0.6   | 96.4  |      | -0.4   | 96.2  |      | -0.4   |
| 23        | 96.6  |      | -0.4   | 96.3  |      | -0.1   | 96.1  |      | -0.1   |
| 24        | 96.3  |      | -0.3   | 96.1  |      | -0.3   | 95.8  |      | -0.3   |
| 25        | 96.9  |      | 0.7    | 96.9  |      | 0.9    | 96.6  |      | 0.8    |
| 26        | 99.6  |      | 2.7    | 99.8  |      | 2.9    | 99.5  |      | 3.0    |
| 27        | 100.1 |      | 0.6    | 100.0 |      | 0.2    | 100.1 |      | 0.6    |
| 28        | 100.3 |      | 0.2    | 100.0 |      | -0.1   | 100.4 |      | 0.3    |
| 29        | 101.0 |      | 0.7    | 100.7 |      | 0.7    | 101.1 |      | 0.7    |

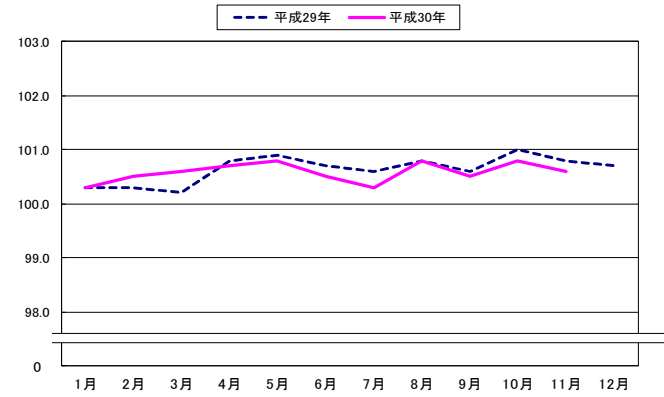
消費者物価指数（全国・佐賀市 総合）及び前年同月比（佐賀市）



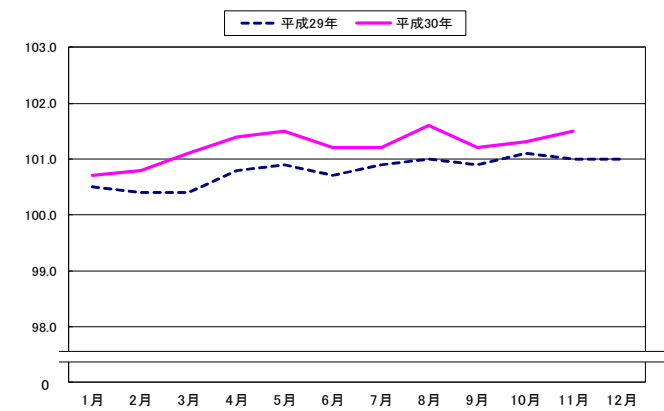
生鮮食品を除く総合



食料（酒類を除く）・エネルギーを除く総合



生鮮食品・エネルギーを除く総合



佐賀市中分類指数

(平成27年=100)

| 項目           | 平成29年平均 | 平成29年11月 | 平成30年10月 | 平成30年11月 | 対前月比(%) | 対前年同月比(%) |
|--------------|---------|----------|----------|----------|---------|-----------|
| 佐賀市総合        | 100.6   | 101.2    | 102.2    | 102.0    | △ 0.1   | 0.9       |
| 食料           | 101.7   | 102.5    | 104.1    | 103.7    | △ 0.4   | 1.2       |
| 穀類           | 99.1    | 99.2     | 104.1    | 105.4    | 1.2     | 6.2       |
| 介類           | 106.0   | 105.7    | 106.3    | 106.5    | 0.2     | 0.7       |
| 魚介類          | 97.9    | 99.0     | 93.7     | 93.6     | △ 0.2   | △ 5.4     |
| 肉卵類          | 97.6    | 98.0     | 104.9    | 104.4    | △ 0.5   | 6.5       |
| 野菜・海藻類       | 102.4   | 108.8    | 116.8    | 106.1    | △ 9.1   | △ 2.5     |
| 果物           | 103.6   | 102.3    | 112.0    | 106.8    | △ 4.6   | 4.4       |
| 油脂・調味料       | 104.2   | 105.5    | 105.6    | 105.7    | 0.1     | 0.2       |
| 菓子類          | 104.3   | 105.0    | 109.5    | 110.1    | 0.5     | 4.8       |
| 調理食品         | 100.5   | 99.9     | 101.3    | 101.8    | 0.5     | 1.9       |
| 飲料           | 101.6   | 101.6    | 102.9    | 103.2    | 0.3     | 1.6       |
| 酒            | 101.3   | 101.9    | 101.0    | 101.1    | 0.1     | △ 0.7     |
| 外食           | 102.0   | 102.1    | 100.0    | 103.7    | 3.7     | 1.5       |
| 住居           | 100.9   | 101.0    | 100.7    | 100.7    | 0.0     | △ 0.2     |
| 賃貸           | 99.6    | 99.6     | 98.9     | 98.9     | 0.0     | △ 0.7     |
| 家設備修繕・維持     | 107.4   | 107.9    | 110.2    | 110.2    | 0.0     | 2.1       |
| 光熱・水道        | 98.0    | 99.0     | 102.2    | 102.6    | 0.3     | 3.6       |
| 電気           | 97.9    | 99.3     | 104.2    | 104.8    | 0.5     | 5.6       |
| ガス           | 96.7    | 97.0     | 98.4     | 98.5     | 0.2     | 1.6       |
| 他の光熱         | 93.1    | 99.7     | 113.4    | 114.6    | 1.1     | 15.0      |
| 上下水道料        | 100.0   | 100.0    | 100.0    | 100.0    | 0.0     | 0.0       |
| 家具・家事用品      | 98.1    | 96.0     | 96.8     | 96.3     | △ 0.5   | 0.3       |
| 家庭用耐久財       | 93.4    | 87.9     | 90.2     | 87.7     | △ 2.8   | △ 0.3     |
| 室内装備品        | 89.6    | 86.8     | 96.7     | 98.7     | 2.0     | 13.7      |
| 寝具類          | 89.8    | 89.6     | 89.6     | 89.6     | 0.0     | 0.0       |
| 家事雑貨         | 109.2   | 110.6    | 107.9    | 108.9    | 0.9     | △ 1.5     |
| 家事用消耗品       | 100.6   | 99.6     | 98.7     | 99.1     | 0.5     | △ 0.5     |
| 家事サービス       | 99.8    | 99.8     | 99.8     | 99.8     | 0.0     | 0.0       |
| 被服及び履物       | 102.6   | 104.0    | 102.9    | 102.6    | △ 0.3   | △ 1.3     |
| 衣料           | 102.4   | 105.3    | 104.9    | 106.2    | 1.2     | 0.9       |
| 和服           | 100.0   | 100.0    | 100.0    | 100.0    | 0.0     | 0.0       |
| 洋服           | 102.4   | 105.4    | 105.0    | 106.3    | 1.3     | 0.9       |
| シャツ・セーター・下着類 | 102.5   | 102.9    | 100.6    | 99.2     | △ 1.3   | △ 3.6     |
| シャツ・セーター類    | 100.5   | 101.2    | 99.4     | 97.5     | △ 1.9   | △ 3.7     |
| 下着類          | 106.8   | 106.7    | 103.1    | 103.0    | △ 0.1   | △ 3.5     |
| 履物類          | 106.9   | 107.0    | 107.5    | 104.1    | △ 3.2   | △ 2.8     |
| 他の被服         | 94.2    | 94.5     | 91.3     | 92.0     | 0.8     | △ 2.7     |
| 被服関連サービス     | 106.0   | 106.0    | 106.0    | 106.0    | 0.0     | 0.0       |

| 項目                   | 平成29年平均 | 平成29年11月 | 平成30年10月 | 平成30年11月 | 対前月比(%) | 対前年同月比(%) |
|----------------------|---------|----------|----------|----------|---------|-----------|
| 保健医療                 | 101.9   | 102.9    | 104.8    | 104.8    | △ 0.1   | 1.8       |
| 医薬品・健康保持用摂取品         | 100.1   | 99.6     | 101.2    | 101.1    | △ 0.1   | 1.5       |
| 保健医療用品・器具            | 101.7   | 102.4    | 104.8    | 104.5    | △ 0.3   | 2.1       |
| 保健医療サービス             | 102.9   | 104.7    | 106.8    | 106.8    | 0.0     | 2.0       |
| 交通・通信                | 98.0    | 98.9     | 100.1    | 100.2    | 0.1     | 1.3       |
| 交通                   | 99.2    | 98.7     | 99.2     | 98.8     | △ 0.4   | 0.1       |
| 自動車等関係               | 99.5    | 101.3    | 104.9    | 105.2    | 0.3     | 3.9       |
| 通信                   | 95.1    | 95.0     | 92.3     | 92.1     | △ 0.2   | △ 3.0     |
| 教育                   | 104.8   | 105.2    | 105.6    | 105.6    | 0.0     | 0.3       |
| 授業料等                 | 103.1   | 103.0    | 102.4    | 102.4    | 0.0     | △ 0.6     |
| 教科書・学習参考教材           | 101.0   | 101.1    | 101.1    | 101.1    | 0.0     | 0.0       |
| 補習教育                 | 107.6   | 108.9    | 110.7    | 110.7    | 0.0     | 1.6       |
| 教養娯楽                 | 101.8   | 102.3    | 102.7    | 102.2    | △ 0.5   | 0.0       |
| 教養娯楽用耐久財             | 96.5    | 92.4     | 101.4    | 100.6    | △ 0.8   | 8.8       |
| 教養娯楽用品               | 102.5   | 102.4    | 99.8     | 97.7     | △ 2.1   | △ 4.6     |
| 書籍・他の印刷物             | 100.6   | 100.9    | 101.2    | 101.2    | 0.0     | 0.3       |
| 教養娯楽サービス             | 102.4   | 103.7    | 104.4    | 104.5    | 0.1     | 0.8       |
| 諸雑費                  | 100.7   | 100.8    | 102.1    | 102.0    | △ 0.1   | 1.2       |
| 理美容サービス              | 99.9    | 99.9     | 99.9     | 99.9     | 0.0     | 0.0       |
| 理美容用品                | 98.5    | 98.2     | 98.6     | 98.2     | △ 0.4   | 0.0       |
| 身の回り用品               | 103.9   | 103.8    | 105.7    | 105.7    | 0.0     | 1.8       |
| たばこ                  | 102.3   | 102.8    | 111.6    | 111.6    | 0.0     | 8.6       |
| 他の諸雑費                | 101.5   | 101.7    | 102.6    | 102.6    | 0.0     | 0.8       |
| 特掲項目                 |         |          |          |          |         |           |
| 生鮮食品                 | 103.9   | 107.8    | 112.0    | 103.3    | △ 7.8   | △ 4.2     |
| 生鮮魚介                 | 106.5   | 105.5    | 104.7    | 105.0    | 0.2     | △ 0.5     |
| 生鮮野菜                 | 101.8   | 111.8    | 117.9    | 100.9    | △ 14.4  | △ 9.7     |
| 生鮮果物                 | 104.1   | 102.8    | 111.2    | 105.5    | △ 5.1   | 2.7       |
| 生鮮食品を除く総合            | 100.5   | 100.9    | 101.8    | 102.0    | 0.2     | 1.1       |
| 生鮮食品を除く食料            | 101.3   | 101.6    | 102.7    | 103.8    | 1.0     | 2.2       |
| 帰属家賃を除く総合            | 100.8   | 101.4    | 102.7    | 102.6    | △ 0.2   | 1.1       |
| 帰属家賃を除く住居            | 104.0   | 104.4    | 105.3    | 105.3    | 0.0     | 0.8       |
| 帰属家賃を除く家賃            | 99.8    | 100.1    | 99.2     | 99.2     | 0.0     | △ 0.9     |
| 帰属家賃・生鮮食品を除く総合       | 100.6   | 101.1    | 102.3    | 102.5    | 0.2     | 1.4       |
| エネルギー                | 97.3    | 99.8     | 106.7    | 107.5    | 0.7     | 7.7       |
| 食料(酒類を除く)・エネルギーを除く総合 | 100.6   | 100.8    | 100.8    | 100.6    | △ 0.2   | △ 0.2     |
| 教育関係費                | 104.5   | 104.8    | 105.4    | 105.4    | 0.0     | 0.6       |
| 教養娯楽関係費              | 101.5   | 101.9    | 102.5    | 101.9    | △ 0.5   | 0.0       |
| 情報通信関係費              | 97.0    | 96.1     | 94.1     | 94.1     | 0.0     | △ 2.1     |
| 生鮮食品・エネルギーを除く総合      | 100.8   | 101.0    | 101.3    | 101.5    | 0.2     | 0.5       |

佐賀市消費者物価指数（中分類）

平成27年=100

| 項目       | 総合     | 食料    | 穀類    | 魚介類   | 肉類    | 乳卵類   | 野菜・<br>海藻 | 果物    | 油脂・<br>調味料 | 菓子類   | 調理食品  | 飲料    | 酒類    | 外食    | 住居    |             |       | 光熱・<br>水道 | 電気代   | ガス代   |
|----------|--------|-------|-------|-------|-------|-------|-----------|-------|------------|-------|-------|-------|-------|-------|-------|-------------|-------|-----------|-------|-------|
|          |        |       |       |       |       |       |           |       |            |       |       |       |       |       | 家賃    | 設備修繕・<br>維持 |       |           |       |       |
| ウエイト     | 10,000 | 2,682 | 213   | 229   | 262   | 111   | 290       | 88    | 123        | 235   | 340   | 146   | 132   | 514   | 1,949 | 1,635       | 315   | 790       | 376   | 167   |
| 平成24年平均  | 96.5   | 94.3  | 101.5 | 86.7  | 99.8  | 91.7  | 91.8      | 96.9  | 91.9       | 96.7  | 92.7  | 95.7  | 97.3  | 93.4  | 100.1 | 101.0       | 95.1  | 92.0      | 88.1  | 90.8  |
| 25       | 96.6   | 94.0  | 102.2 | 89.0  | 96.2  | 91.2  | 91.4      | 96.9  | 92.4       | 94.3  | 92.4  | 95.3  | 97.1  | 93.7  | 99.3  | 100.3       | 94.0  | 96.5      | 93.7  | 97.0  |
| 26       | 99.1   | 97.5  | 102.3 | 99.1  | 98.9  | 98.0  | 94.7      | 92.9  | 97.1       | 96.4  | 96.2  | 98.6  | 99.6  | 97.2  | 99.4  | 100.1       | 95.3  | 101.0     | 100.4 | 100.6 |
| 27       | 100.0  | 100.0 | 100.0 | 100.0 | 100.0 | 100.0 | 100.0     | 100.0 | 100.0      | 100.0 | 100.0 | 100.0 | 100.0 | 100.0 | 100.0 | 100.0       | 100.0 | 100.0     | 100.0 | 100.0 |
| 28       | 100.2  | 101.6 | 99.3  | 102.5 | 98.4  | 98.8  | 105.5     | 105.3 | 102.6      | 103.7 | 101.1 | 101.5 | 99.0  | 101.5 | 100.7 | 99.7        | 105.8 | 95.8      | 94.5  | 96.8  |
| 29       | 100.6  | 101.7 | 99.1  | 106.0 | 97.9  | 97.6  | 102.4     | 103.6 | 104.2      | 104.3 | 100.5 | 101.6 | 101.3 | 102.0 | 100.9 | 99.6        | 107.4 | 98.0      | 97.9  | 96.7  |
| 平成29年 1月 | 100.2  | 101.9 | 98.8  | 106.0 | 97.2  | 96.9  | 106.4     | 107.7 | 103.2      | 104.9 | 100.4 | 100.9 | 99.3  | 101.6 | 100.7 | 99.6        | 106.3 | 95.7      | 93.7  | 96.0  |
| 2        | 100.1  | 101.2 | 98.6  | 103.2 | 96.4  | 97.5  | 103.2     | 109.1 | 103.3      | 103.1 | 100.6 | 101.3 | 99.4  | 101.6 | 100.7 | 99.6        | 106.5 | 96.1      | 94.3  | 96.2  |
| 3        | 100.1  | 101.1 | 99.4  | 104.2 | 97.6  | 97.8  | 102.4     | 100.4 | 102.1      | 103.7 | 100.1 | 101.3 | 100.2 | 101.6 | 100.9 | 99.6        | 107.4 | 96.6      | 95.3  | 96.4  |
| 4        | 100.5  | 101.1 | 98.7  | 101.2 | 96.5  | 98.1  | 104.9     | 100.1 | 103.3      | 104.1 | 101.0 | 101.3 | 100.2 | 101.6 | 100.8 | 99.6        | 107.4 | 97.3      | 96.5  | 96.6  |
| 5        | 100.7  | 101.3 | 99.9  | 103.6 | 96.1  | 97.6  | 102.5     | 103.9 | 102.5      | 104.6 | 101.3 | 101.9 | 100.4 | 101.6 | 100.9 | 99.6        | 107.5 | 98.5      | 98.9  | 96.8  |
| 6        | 100.6  | 101.6 | 98.3  | 111.1 | 95.7  | 97.3  | 97.9      | 107.0 | 104.8      | 103.5 | 100.4 | 102.0 | 103.4 | 102.2 | 100.9 | 99.6        | 107.5 | 98.7      | 99.4  | 96.9  |
| 7        | 100.4  | 100.9 | 100.0 | 103.8 | 99.0  | 97.4  | 94.1      | 101.0 | 106.1      | 104.8 | 100.0 | 101.8 | 103.4 | 102.2 | 100.9 | 99.7        | 107.5 | 98.7      | 99.4  | 96.9  |
| 8        | 100.6  | 101.2 | 99.2  | 104.9 | 99.3  | 97.1  | 96.2      | 106.9 | 104.6      | 104.5 | 100.2 | 101.6 | 102.1 | 102.2 | 100.9 | 99.7        | 107.2 | 98.8      | 99.5  | 97.0  |
| 9        | 100.8  | 102.2 | 98.7  | 111.0 | 99.8  | 97.7  | 103.4     | 96.5  | 105.5      | 103.7 | 100.2 | 102.1 | 102.2 | 102.2 | 101.0 | 99.8        | 107.8 | 98.8      | 99.7  | 97.1  |
| 10       | 100.9  | 101.6 | 99.7  | 106.7 | 99.4  | 98.0  | 100.0     | 99.1  | 105.2      | 103.6 | 101.0 | 101.2 | 102.1 | 102.1 | 101.1 | 99.7        | 108.0 | 99.0      | 99.6  | 97.1  |
| 11       | 101.2  | 102.5 | 99.2  | 105.7 | 99.0  | 98.0  | 108.8     | 102.3 | 105.5      | 105.0 | 99.9  | 101.6 | 101.9 | 102.1 | 101.0 | 99.6        | 107.9 | 99.0      | 99.3  | 97.0  |
| 12       | 101.4  | 103.4 | 98.7  | 111.4 | 98.9  | 98.0  | 109.1     | 108.9 | 103.9      | 105.7 | 100.7 | 101.7 | 101.4 | 102.5 | 101.0 | 99.6        | 107.9 | 99.0      | 99.1  | 97.0  |
| 平成30年 1月 | 101.6  | 105.3 | 99.3  | 113.2 | 98.5  | 97.7  | 122.8     | 112.3 | 104.7      | 106.8 | 101.0 | 101.7 | 102.2 | 102.5 | 100.8 | 99.5        | 107.8 | 99.1      | 99.3  | 97.0  |
| 2        | 101.6  | 104.4 | 98.2  | 111.4 | 99.0  | 97.7  | 119.1     | 111.6 | 104.6      | 105.2 | 100.2 | 101.6 | 101.6 | 102.5 | 100.9 | 99.5        | 107.9 | 99.4      | 99.6  | 97.0  |
| 3        | 101.5  | 103.4 | 99.9  | 108.2 | 98.4  | 99.1  | 109.7     | 104.2 | 105.6      | 106.1 | 102.2 | 101.3 | 101.8 | 102.5 | 101.2 | 99.5        | 109.7 | 99.8      | 100.1 | 97.6  |
| 4        | 101.4  | 102.9 | 103.7 | 106.2 | 97.8  | 103.7 | 103.0     | 99.3  | 106.4      | 106.1 | 102.2 | 102.5 | 101.6 | 102.6 | 101.1 | 99.5        | 109.9 | 100.1     | 100.7 | 97.8  |
| 5        | 101.7  | 103.1 | 104.0 | 105.7 | 98.0  | 104.8 | 99.3      | 112.6 | 105.6      | 108.3 | 101.6 | 103.1 | 101.0 | 102.7 | 101.2 | 99.5        | 109.9 | 100.9     | 102.2 | 97.9  |
| 6        | 101.5  | 102.9 | 103.7 | 106.1 | 97.0  | 105.2 | 99.8      | 105.6 | 105.2      | 108.3 | 101.9 | 103.0 | 101.3 | 103.1 | 100.6 | 98.9        | 109.9 | 101.1     | 102.5 | 98.0  |
| 7        | 101.5  | 103.0 | 103.8 | 107.5 | 96.9  | 105.1 | 99.0      | 106.1 | 104.2      | 109.5 | 101.2 | 102.7 | 101.3 | 103.5 | 100.7 | 98.9        | 109.8 | 101.1     | 102.6 | 98.1  |
| 8        | 102.3  | 104.9 | 105.3 | 111.0 | 95.6  | 104.5 | 110.3     | 110.2 | 105.1      | 109.3 | 103.0 | 103.2 | 101.0 | 103.5 | 100.6 | 98.9        | 109.7 | 101.3     | 102.9 | 98.2  |
| 9        | 102.2  | 104.9 | 104.2 | 115.8 | 95.1  | 106.3 | 114.7     | 107.0 | 105.7      | 110.1 | 102.0 | 103.5 | 100.9 | 99.8  | 100.6 | 98.9        | 109.4 | 101.6     | 103.5 | 98.3  |
| 10       | 102.2  | 104.1 | 104.1 | 106.3 | 93.7  | 104.9 | 116.8     | 112.0 | 105.6      | 109.5 | 101.3 | 102.9 | 101.0 | 100.0 | 100.7 | 98.9        | 110.2 | 102.2     | 104.2 | 98.4  |
| 11       | 102.0  | 103.7 | 105.4 | 106.5 | 93.6  | 104.4 | 106.1     | 106.8 | 105.7      | 110.1 | 101.8 | 103.2 | 101.1 | 103.7 | 100.7 | 98.9        | 110.2 | 102.6     | 104.8 | 98.5  |
| 平成23年度平均 | 96.6   | 94.0  | 99.3  | 86.4  | 101.6 | 93.5  | 93.6      | 98.9  | 93.1       | 96.3  | 88.2  | 96.4  | 97.7  | 93.2  | 100.6 | 101.6       | 95.1  | 90.3      | 85.9  | 88.2  |
| 24       | 96.3   | 93.8  | 101.7 | 85.9  | 98.7  | 90.9  | 89.4      | 93.7  | 91.3       | 96.8  | 93.7  | 95.6  | 97.2  | 93.5  | 99.9  | 100.8       | 94.9  | 92.5      | 88.2  | 92.0  |
| 25       | 96.9   | 94.4  | 102.3 | 91.4  | 95.6  | 92.7  | 92.9      | 96.8  | 94.0       | 93.2  | 92.4  | 95.8  | 97.1  | 93.7  | 99.2  | 100.2       | 94.0  | 97.8      | 96.0  | 98.1  |
| 26       | 99.6   | 98.3  | 101.8 | 100.0 | 100.6 | 98.1  | 94.8      | 93.3  | 96.9       | 97.9  | 97.5  | 99.1  | 100.3 | 98.5  | 99.5  | 100.1       | 96.3  | 101.8     | 101.7 | 101.5 |
| 27       | 100.1  | 100.5 | 99.7  | 100.8 | 99.3  | 100.6 | 100.9     | 101.9 | 101.0      | 101.1 | 100.9 | 100.4 | 99.8  | 100.4 | 100.3 | 100.0       | 102.2 | 98.9      | 98.6  | 99.1  |
| 28       | 100.3  | 101.8 | 99.2  | 102.9 | 97.9  | 98.2  | 106.8     | 105.1 | 103.0      | 103.9 | 100.9 | 101.6 | 99.1  | 101.6 | 100.7 | 99.6        | 106.0 | 95.7      | 94.1  | 96.3  |
| 29       | 101.0  | 102.4 | 99.2  | 107.7 | 98.3  | 97.8  | 105.7     | 104.5 | 104.7      | 104.8 | 100.7 | 101.7 | 101.9 | 102.2 | 100.9 | 99.6        | 107.8 | 98.8      | 99.2  | 97.0  |

| 項目       | 他の光熱  |       | 家具・家事用品 | 家庭用耐財 | 室内装備品 | 寝具類   | 家事雑貨  | 家事用品消耗品 | 家事サービス | 被服及び履物 | 衣料    |       |       | シャツ・セーター・ |       | 履物類   | 他の被服  | 被服関連サービス |       |
|----------|-------|-------|---------|-------|-------|-------|-------|---------|--------|--------|-------|-------|-------|-----------|-------|-------|-------|----------|-------|
|          | 水道料   | 下水    |         |       |       |       |       |         |        |        | 和服    | 洋服    | 下着類   | シャツ・セーター類 | 下着類   |       |       |          |       |
| ウエイト     | 33    | 214   | 389     | 135   | 28    | 27    | 72    | 91      | 36     | 385    | 161   | 4     | 157   | 120       | 83    | 38    | 52    | 31       | 22    |
| 平成24年平均  | 110.4 | 97.2  | 96.1    | 94.8  | 108.6 | 103.0 | 91.7  | 95.7    | 98.6   | 97.2   | 96.6  | 99.1  | 96.4  | 101.2     | 103.5 | 95.7  | 85.3  | 104.9    | 93.5  |
| 25       | 118.3 | 97.2  | 93.1    | 87.5  | 99.2  | 98.1  | 93.8  | 94.0    | 98.3   | 96.6   | 95.6  | 99.1  | 95.4  | 100.3     | 103.5 | 92.6  | 88.1  | 102.6    | 93.3  |
| 26       | 123.8 | 99.1  | 95.8    | 94.9  | 99.0  | 97.9  | 93.9  | 95.5    | 100.0  | 97.7   | 95.8  | 99.8  | 95.5  | 101.4     | 103.4 | 96.3  | 92.2  | 103.8    | 96.6  |
| 27       | 100.0 | 100.0 | 100.0   | 100.0 | 100.0 | 100.0 | 100.0 | 100.0   | 100.0  | 100.0  | 100.0 | 100.0 | 100.0 | 100.0     | 100.0 | 100.0 | 100.0 | 100.0    | 100.0 |
| 28       | 79.4  | 100.0 | 99.4    | 95.4  | 95.2  | 99.5  | 104.4 | 102.5   | 99.8   | 102.4  | 102.7 | 100.0 | 102.7 | 102.3     | 101.5 | 104.0 | 104.3 | 98.0     | 102.2 |
| 29       | 93.1  | 100.0 | 98.1    | 93.4  | 89.6  | 89.8  | 109.2 | 100.6   | 99.8   | 102.6  | 102.4 | 100.0 | 102.4 | 102.5     | 100.5 | 106.8 | 106.9 | 94.2     | 106.0 |
| 平成29年 1月 | 90.3  | 100.0 | 101.0   | 99.6  | 91.3  | 95.8  | 108.1 | 102.4   | 99.8   | 100.8  | 100.8 | 100.0 | 100.8 | 98.6      | 95.5  | 105.4 | 108.3 | 93.5     | 106.0 |
| 2        | 90.3  | 100.0 | 100.1   | 99.1  | 90.7  | 89.6  | 107.6 | 101.7   | 99.8   | 102.5  | 102.7 | 100.0 | 102.7 | 101.2     | 98.3  | 107.5 | 108.3 | 94.4     | 106.0 |
| 3        | 90.3  | 100.0 | 98.7    | 94.1  | 90.7  | 93.3  | 108.7 | 101.3   | 99.8   | 101.5  | 101.9 | 100.0 | 101.9 | 99.4      | 95.6  | 107.7 | 106.6 | 95.9     | 106.0 |
| 4        | 92.8  | 100.0 | 98.4    | 94.1  | 90.4  | 92.2  | 108.6 | 100.6   | 99.8   | 104.0  | 104.0 | 100.0 | 104.1 | 104.5     | 103.1 | 107.7 | 107.0 | 95.8     | 106.0 |
| 5        | 92.8  | 100.0 | 99.3    | 96.7  | 90.0  | 90.1  | 108.7 | 100.9   | 99.8   | 103.5  | 102.9 | 100.0 | 102.9 | 105.0     | 103.7 | 107.7 | 107.0 | 93.9     | 106.0 |
| 6        | 91.1  | 100.0 | 97.4    | 92.7  | 90.8  | 90.1  | 108.7 | 98.6    | 99.8   | 102.8  | 102.1 | 100.0 | 102.1 | 103.6     | 102.0 | 107.2 | 107.0 | 93.5     | 106.0 |
| 7        | 91.1  | 100.0 | 98.6    | 95.0  | 89.6  | 86.5  | 109.9 | 100.9   | 99.8   | 100.7  | 98.5  | 100.0 | 98.4  | 101.9     | 100.0 | 106.2 | 107.0 | 93.5     | 106.0 |
| 8        | 91.1  | 100.0 | 97.6    | 92.1  | 90.5  | 86.5  | 110.2 | 100.4   | 99.8   | 100.8  | 98.7  | 100.0 | 98.7  | 101.9     | 100.4 | 105.2 | 107.0 | 93.5     | 106.0 |
| 9        | 91.1  | 100.0 | 96.3    | 89.6  | 89.5  | 85.6  | 108.5 | 100.3   | 99.8   | 104.0  | 104.4 | 100.0 | 104.5 | 104.3     | 103.3 | 106.6 | 107.0 | 93.5     | 106.0 |
| 10       | 94.8  | 100.0 | 98.0    | 92.4  | 86.8  | 90.7  | 111.1 | 100.7   | 99.8   | 103.8  | 104.9 | 100.0 | 105.0 | 102.7     | 101.6 | 105.1 | 107.0 | 94.9     | 106.0 |
| 11       | 99.7  | 100.0 | 96.0    | 87.9  | 86.8  | 89.6  | 110.6 | 99.6    | 99.8   | 104.0  | 105.3 | 100.0 | 105.4 | 102.9     | 101.2 | 106.7 | 107.0 | 94.5     | 106.0 |
| 12       | 101.6 | 100.0 | 95.6    | 87.2  | 88.1  | 87.0  | 109.9 | 99.7    | 99.8   | 102.3  | 102.4 | 100.0 | 102.5 | 103.3     | 101.1 | 108.2 | 103.0 | 93.6     | 106.0 |
| 平成30年 1月 | 102.9 | 100.0 | 95.8    | 87.3  | 87.3  | 85.8  | 111.4 | 99.9    | 99.8   | 100.1  | 99.7  | 100.0 | 99.7  | 100.0     | 97.6  | 105.2 | 103.8 | 92.1     | 106.0 |
| 2        | 106.3 | 100.0 | 95.4    | 86.3  | 92.6  | 85.5  | 110.9 | 98.5    | 99.8   | 103.5  | 104.2 | 100.0 | 104.3 | 103.1     | 101.3 | 107.0 | 107.8 | 92.7     | 106.0 |
| 3        | 106.3 | 100.0 | 96.4    | 85.0  | 98.0  | 82.5  | 111.2 | 103.9   | 99.8   | 102.8  | 104.9 | 100.0 | 105.1 | 99.7      | 96.2  | 107.4 | 107.8 | 92.8     | 106.0 |
| 4        | 105.1 | 100.0 | 95.6    | 83.9  | 96.0  | 87.4  | 110.1 | 102.1   | 99.8   | 103.7  | 104.9 | 100.0 | 105.1 | 102.8     | 101.1 | 106.5 | 107.8 | 91.8     | 106.0 |
| 5        | 106.0 | 100.0 | 97.7    | 89.7  | 95.5  | 87.4  | 110.9 | 101.9   | 99.8   | 103.2  | 104.4 | 100.0 | 104.5 | 102.0     | 100.7 | 104.8 | 107.8 | 91.8     | 106.0 |
| 6        | 107.3 | 100.0 | 98.5    | 90.5  | 95.4  | 90.9  | 109.8 | 104.2   | 99.8   | 102.2  | 102.6 | 100.0 | 102.7 | 101.8     | 100.1 | 105.5 | 107.1 | 90.6     | 106.0 |
| 7        | 107.3 | 100.0 | 97.8    | 90.3  | 96.0  | 90.9  | 109.3 | 101.6   | 99.8   | 101.1  | 101.5 | 100.0 | 101.5 | 99.8      | 97.1  | 105.9 | 107.1 | 90.9     | 106.0 |
| 8        | 107.3 | 100.0 | 97.5    | 88.0  | 96.4  | 90.9  | 109.1 | 103.8   | 99.8   | 99.3   | 99.9  | 100.0 | 99.9  | 96.2      | 91.8  | 105.9 | 107.5 | 90.0     | 106.0 |
| 9        | 108.1 | 100.0 | 97.2    | 90.6  | 96.7  | 88.1  | 108.6 | 99.9    | 99.8   | 103.2  | 104.5 | 100.0 | 104.6 | 102.3     | 100.9 | 105.4 | 107.5 | 90.5     | 106.0 |
| 10       | 113.4 | 100.0 | 96.8    | 90.2  | 96.7  | 89.6  | 107.9 | 98.7    | 99.8   | 102.9  | 104.9 | 100.0 | 105.0 | 100.6     | 99.4  | 103.1 | 107.5 | 91.3     | 106.0 |
| 11       | 114.6 | 100.0 | 96.3    | 87.7  | 98.7  | 89.6  | 108.9 | 99.1    | 99.8   | 102.6  | 106.2 | 100.0 | 106.3 | 99.2      | 97.5  | 103.0 | 104.1 | 92.0     | 106.0 |
| 平成23年度平均 | 108.4 | 97.2  | 97.6    | 102.0 | 110.2 | 99.5  | 89.2  | 96.3    | 98.6   | 97.8   | 97.3  | 97.8  | 97.2  | 101.8     | 103.4 | 97.9  | 87.3  | 104.0    | 93.6  |
| 24       | 112.7 | 97.2  | 95.4    | 92.2  | 106.7 | 102.8 | 92.9  | 95.2    | 98.6   | 96.4   | 96.4  | 99.1  | 96.2  | 99.3      | 101.3 | 94.5  | 85.3  | 103.5    | 93.5  |
| 25       | 119.8 | 97.2  | 93.1    | 88.6  | 97.9  | 96.9  | 92.9  | 94.3    | 98.2   | 96.7   | 95.2  | 99.1  | 94.9  | 100.9     | 104.2 | 93.0  | 88.5  | 103.7    | 93.3  |
| 26       | 119.1 | 99.8  | 96.9    | 95.9  | 99.3  | 98.1  | 96.5  | 95.9    | 100.6  | 98.5   | 97.4  | 100.0 | 97.1  | 100.9     | 102.2 | 97.8  | 94.8  | 101.8    | 98.2  |
| 27       | 93.8  | 100.0 | 99.4    | 97.8  | 99.4  | 97.5  | 100.7 | 101.3   | 99.9   | 100.5  | 100.4 | 100.0 | 100.4 | 100.8     | 100.7 | 101.1 | 100.9 | 99.9     | 100.0 |
| 28       | 82.2  | 100.0 | 100.0   | 96.9  | 93.2  | 99.2  | 105.6 | 102.4   | 99.8   | 102.8  | 103.3 | 100.0 | 103.4 | 102.0     | 100.7 | 105.0 | 105.8 | 97.4     | 103.7 |
| 29       | 96.8  | 100.0 | 97.1    | 90.5  | 90.0  | 87.7  | 110.0 | 100.3   | 99.8   | 102.7  | 102.7 | 100.0 | 102.7 | 102.8     | 101.0 | 106.7 | 106.6 | 93.7     | 106.0 |

| 項目       | 保 健 医 療 | 医薬品・健康保持用摂取品 | 保健医療用品・器具 | 保健医療サービス | 交通・通信 | 交 通   | 自動車等関係費 | 通 信   | 教 育   | 授業料等  | 教科書・学習参考教材 | 補習教育  | 教 養 娯 楽 | 教養娯楽用耐久財 | 教 養 娯 楽 用 品 | 書籍・他印刷物の印刷物 | 教養娯楽サービス | 諸 雑 費 | 理 美 容 サービス |
|----------|---------|--------------|-----------|----------|-------|-------|---------|-------|-------|-------|------------|-------|---------|----------|-------------|-------------|----------|-------|------------|
|          |         |              |           |          |       |       |         |       |       |       |            |       |         |          |             |             |          |       |            |
| ウエイト     | 506     | 148          | 80        | 278      | 1,545 | 156   | 879     | 510   | 268   | 156   | 8          | 104   | 907     | 59       | 204         | 132         | 512      | 580   | 113        |
| 平成24年平均  | 99.4    | 101.1        | 98.0      | 98.7     | 97.9  | 93.7  | 98.6    | 98.1  | 95.1  | 94.0  | 94.0       | 97.1  | 96.2    | 98.3     | 93.0        | 96.3        | 97.1     | 96.2  | 97.8       |
| 25       | 98.3    | 98.2         | 97.7      | 98.5     | 99.6  | 93.4  | 101.4   | 98.4  | 95.0  | 94.0  | 96.6       | 96.5  | 94.7    | 92.3     | 92.2        | 96.5        | 95.6     | 97.2  | 97.8       |
| 26       | 98.8    | 98.7         | 97.8      | 99.3     | 101.9 | 97.3  | 104.0   | 99.6  | 97.5  | 96.3  | 98.7       | 99.3  | 98.1    | 98.3     | 97.0        | 98.8        | 98.4     | 100.1 | 99.4       |
| 27       | 100.0   | 100.0        | 100.0     | 100.0    | 100.0 | 100.0 | 100.0   | 100.0 | 100.0 | 100.0 | 100.0      | 100.0 | 100.0   | 100.0    | 100.0       | 100.0       | 100.0    | 100.0 | 100.0      |
| 28       | 100.9   | 100.7        | 99.2      | 101.4    | 97.7  | 99.8  | 96.5    | 99.1  | 102.8 | 102.8 | 100.5      | 103.0 | 101.3   | 100.7    | 102.1       | 100.3       | 101.4    | 100.4 | 99.9       |
| 29       | 101.9   | 100.1        | 101.7     | 102.9    | 98.0  | 99.2  | 99.5    | 95.1  | 104.8 | 103.1 | 101.0      | 107.6 | 101.8   | 96.5     | 102.5       | 100.6       | 102.4    | 100.7 | 99.9       |
| 平成29年 1月 | 100.1   | 98.3         | 98.5      | 101.6    | 97.7  | 97.7  | 98.2    | 96.7  | 103.5 | 103.5 | 100.5      | 103.7 | 100.7   | 100.7    | 100.8       | 100.5       | 100.6    | 100.7 | 99.9       |
| 2        | 100.4   | 99.2         | 98.6      | 101.6    | 97.2  | 98.1  | 98.4    | 95.1  | 103.5 | 103.5 | 100.8      | 103.7 | 101.1   | 98.0     | 102.6       | 100.5       | 101.0    | 100.4 | 99.9       |
| 3        | 100.8   | 99.5         | 100.6     | 101.6    | 97.2  | 99.8  | 99.4    | 92.7  | 103.5 | 103.5 | 100.8      | 103.7 | 101.8   | 100.1    | 104.1       | 100.5       | 101.4    | 100.6 | 99.9       |
| 4        | 101.3   | 100.1        | 102.7     | 101.6    | 97.9  | 97.5  | 99.5    | 95.4  | 104.9 | 103.0 | 101.1      | 108.2 | 102.9   | 99.1     | 105.6       | 100.5       | 102.9    | 100.7 | 99.9       |
| 5        | 101.7   | 101.2        | 103.0     | 101.6    | 97.9  | 97.9  | 99.2    | 95.6  | 105.2 | 103.0 | 101.1      | 108.9 | 102.7   | 98.0     | 104.9       | 100.6       | 102.9    | 100.8 | 99.9       |
| 6        | 101.5   | 100.8        | 102.5     | 101.6    | 98.1  | 97.6  | 99.3    | 96.3  | 105.2 | 103.0 | 101.1      | 108.9 | 101.8   | 96.6     | 103.8       | 100.7       | 101.9    | 100.4 | 99.9       |
| 7        | 101.6   | 101.0        | 102.9     | 101.6    | 98.4  | 101.5 | 99.1    | 96.3  | 105.2 | 103.0 | 101.1      | 108.9 | 100.5   | 95.6     | 99.4        | 100.7       | 101.4    | 100.7 | 99.9       |
| 8        | 103.4   | 101.2        | 103.1     | 104.6    | 98.2  | 103.3 | 99.3    | 94.6  | 105.2 | 103.0 | 101.1      | 108.9 | 102.1   | 95.2     | 100.8       | 100.6       | 103.9    | 100.8 | 99.9       |
| 9        | 103.2   | 100.8        | 102.6     | 104.6    | 97.6  | 99.0  | 99.3    | 94.2  | 105.2 | 103.0 | 101.1      | 108.9 | 101.0   | 92.8     | 100.1       | 100.6       | 102.3    | 100.9 | 99.9       |
| 10       | 102.9   | 99.9         | 102.0     | 104.7    | 98.2  | 99.2  | 99.8    | 95.0  | 105.2 | 103.0 | 101.1      | 108.9 | 102.4   | 94.1     | 102.3       | 100.6       | 103.9    | 100.9 | 99.9       |
| 11       | 102.9   | 99.6         | 102.4     | 104.7    | 98.9  | 98.7  | 101.3   | 95.0  | 105.2 | 103.0 | 101.1      | 108.9 | 102.3   | 92.4     | 102.4       | 100.9       | 103.7    | 100.8 | 99.9       |
| 12       | 103.0   | 100.3        | 101.9     | 104.7    | 99.2  | 99.5  | 101.6   | 95.0  | 105.2 | 103.0 | 101.1      | 108.9 | 102.4   | 95.5     | 103.5       | 101.0       | 103.1    | 100.9 | 99.9       |
| 平成30年 1月 | 102.7   | 99.1         | 102.6     | 104.7    | 98.9  | 97.8  | 101.4   | 94.8  | 105.2 | 103.0 | 101.1      | 108.9 | 101.2   | 95.2     | 102.7       | 101.1       | 101.4    | 100.9 | 99.9       |
| 2        | 102.7   | 99.2         | 102.3     | 104.7    | 99.5  | 97.7  | 102.6   | 94.8  | 105.6 | 103.0 | 101.1      | 109.9 | 101.1   | 95.5     | 98.9        | 101.0       | 102.6    | 101.0 | 99.9       |
| 3        | 102.9   | 99.2         | 103.2     | 104.7    | 99.8  | 100.1 | 102.6   | 94.9  | 105.6 | 103.0 | 101.1      | 109.9 | 100.9   | 94.4     | 99.6        | 101.1       | 102.0    | 100.9 | 99.9       |
| 4        | 103.4   | 99.5         | 103.3     | 105.4    | 99.4  | 98.3  | 102.5   | 94.5  | 105.7 | 102.7 | 101.1      | 110.7 | 101.6   | 92.9     | 100.7       | 101.1       | 103.1    | 101.3 | 99.9       |
| 5        | 103.7   | 100.7        | 103.0     | 105.4    | 99.8  | 98.0  | 103.3   | 94.5  | 105.7 | 102.7 | 101.1      | 110.7 | 101.4   | 95.6     | 99.0        | 101.1       | 103.1    | 101.2 | 99.9       |
| 6        | 104.0   | 101.0        | 104.2     | 105.4    | 100.0 | 98.1  | 104.7   | 92.5  | 105.6 | 102.4 | 101.1      | 110.7 | 101.0   | 93.5     | 98.1        | 101.1       | 103.0    | 100.8 | 99.9       |
| 7        | 104.2   | 101.6        | 104.9     | 105.4    | 100.3 | 101.8 | 104.5   | 92.6  | 105.6 | 102.4 | 101.1      | 110.7 | 100.2   | 92.4     | 96.5        | 101.1       | 102.3    | 100.8 | 99.9       |
| 8        | 105.0   | 101.6        | 105.1     | 106.7    | 100.6 | 104.2 | 104.6   | 92.6  | 105.6 | 102.4 | 101.1      | 110.7 | 103.4   | 95.4     | 98.9        | 101.1       | 106.6    | 101.0 | 99.9       |
| 9        | 104.8   | 101.0        | 104.9     | 106.8    | 100.0 | 99.5  | 104.7   | 92.2  | 105.6 | 102.4 | 101.1      | 110.7 | 101.5   | 99.8     | 98.7        | 101.2       | 102.9    | 101.1 | 99.9       |
| 10       | 104.8   | 101.2        | 104.8     | 106.8    | 100.1 | 99.2  | 104.9   | 92.3  | 105.6 | 102.4 | 101.1      | 110.7 | 102.7   | 101.4    | 99.8        | 101.2       | 104.4    | 102.1 | 99.9       |
| 11       | 104.8   | 101.1        | 104.5     | 106.8    | 100.2 | 98.8  | 105.2   | 92.1  | 105.6 | 102.4 | 101.1      | 110.7 | 102.2   | 100.6    | 97.7        | 101.2       | 104.5    | 102.0 | 99.9       |
| 12       |         |              |           |          |       |       |         |       |       |       |            |       |         |          |             |             |          |       |            |
| 平成23年度平均 | 100.0   | 102.9        | 98.4      | 98.6     | 97.9  | 93.9  | 98.2    | 98.7  | 95.0  | 93.9  | 92.3       | 97.1  | 97.4    | 104.5    | 94.5        | 95.9        | 97.8     | 96.4  | 97.8       |
| 24       | 99.3    | 100.9        | 97.9      | 98.7     | 98.0  | 93.5  | 98.9    | 98.0  | 95.2  | 94.0  | 94.6       | 97.1  | 95.6    | 95.4     | 92.4        | 96.4        | 96.6     | 96.2  | 97.8       |
| 25       | 97.9    | 97.2         | 97.6      | 98.5     | 100.0 | 93.3  | 102.0   | 98.6  | 95.0  | 93.9  | 97.3       | 96.2  | 94.9    | 92.8     | 92.6        | 96.5        | 95.7     | 97.8  | 97.8       |
| 26       | 99.2    | 99.2         | 98.7      | 99.5     | 101.9 | 99.0  | 103.5   | 99.7  | 98.4  | 97.1  | 99.2       | 100.4 | 99.1    | 98.2     | 98.6        | 99.5        | 99.3     | 100.5 | 100.0      |
| 27       | 100.2   | 100.1        | 100.2     | 100.3    | 99.5  | 100.0 | 99.0    | 100.4 | 100.7 | 100.9 | 100.5      | 100.4 | 100.3   | 102.2    | 100.2       | 100.1       | 100.2    | 100.1 | 100.0      |
| 28       | 100.9   | 100.6        | 98.7      | 101.6    | 97.6  | 99.7  | 97.3    | 97.7  | 103.3 | 103.5 | 100.5      | 103.2 | 101.6   | 99.8     | 102.4       | 100.4       | 101.7    | 100.5 | 99.9       |
| 29       | 102.5   | 100.2        | 102.6     | 103.7    | 98.6  | 99.2  | 100.4   | 95.2  | 105.3 | 103.0 | 101.1      | 109.0 | 101.8   | 95.4     | 102.0       | 100.8       | 102.7    | 100.8 | 99.9       |



| 項目       | 理美容用品 | 身の回り用品 | たばこ   | 他の諸雑費 | 生鮮食品  | 生鮮魚介  | 生鮮野菜  | 生鮮果物  | 生鮮食品を除く総合 | 生鮮食品を除く食料 | 帰属家賃を除く総合 | 帰属家賃を除く住居 | 帰属家賃・生鮮食品を除く総合 | エネルギー | 食料(酒類を除く)・エネルギーを除く総合 | 教育関係費 | 教養娯楽関係費 | 情報通信関係費 | 生鮮食品・エネルギーを除く総合 |       |
|----------|-------|--------|-------|-------|-------|-------|-------|-------|-----------|-----------|-----------|-----------|----------------|-------|----------------------|-------|---------|---------|-----------------|-------|
|          |       |        |       |       |       |       |       |       |           |           |           |           |                |       |                      |       |         |         |                 |       |
| ウエイト     | 153   | 57     | 52    | 205   | 403   | 141   | 182   | 80    | 9,597     | 2,279     | 8,621     | 571       | 256            | 8,218 | 865                  | 6,585 | 341     | 973     | 549             | 8,732 |
| 平成24年平均  | 96.6  | 90.9   | 95.9  | 96.5  | 90.8  | 85.5  | 92.2  | 97.3  | 96.8      | 94.9      | 95.9      | 98.7      | 101.3          | 96.1  | 95.3                 | 97.6  | 95.4    | 96.3    | 100.4           | -     |
| 25       | 97.4  | 93.3   | 95.9  | 97.9  | 91.2  | 89.1  | 90.2  | 97.3  | 96.9      | 94.4      | 96.1      | 97.8      | 100.4          | 96.4  | 101.3                | 97.1  | 95.3    | 94.7    | 99.0            | -     |
| 26       | 98.1  | 98.1   | 99.0  | 102.4 | 95.4  | 100.0 | 92.8  | 93.0  | 99.2      | 97.8      | 98.9      | 98.2      | 100.2          | 99.1  | 106.5                | 98.7  | 97.6    | 98.1    | 100.1           | -     |
| 27       | 100.0 | 100.0  | 100.0 | 100.0 | 100.0 | 100.0 | 100.0 | 100.0 | 100.0     | 100.0     | 100.0     | 100.0     | 100.0          | 100.0 | 100.0                | 100.0 | 100.0   | 100.0   | 100.0           | 100.0 |
| 28       | 99.0  | 103.4  | 101.2 | 100.8 | 105.4 | 102.2 | 107.7 | 105.9 | 100.0     | 100.9     | 100.3     | 103.1     | 99.7           | 100.1 | 92.4                 | 100.7 | 102.9   | 101.2   | 99.1            | 100.8 |
| 29       | 98.5  | 103.9  | 102.3 | 101.5 | 103.9 | 106.5 | 101.8 | 104.1 | 100.5     | 101.3     | 100.8     | 104.0     | 99.8           | 100.6 | 97.3                 | 100.6 | 104.5   | 101.5   | 97.0            | 100.8 |
| 平成29年 1月 | 98.9  | 104.3  | 101.7 | 101.1 | 108.0 | 106.8 | 108.9 | 108.3 | 99.9      | 100.8     | 100.3     | 103.2     | 99.5           | 99.9  | 94.2                 | 100.3 | 103.8   | 100.2   | 98.2            | 100.5 |
| 2        | 98.3  | 103.5  | 101.7 | 101.1 | 105.0 | 102.3 | 104.6 | 110.6 | 99.9      | 100.5     | 100.1     | 103.4     | 99.5           | 99.9  | 94.6                 | 100.3 | 103.7   | 100.6   | 97.6            | 100.4 |
| 3        | 98.6  | 104.2  | 101.7 | 101.1 | 102.0 | 103.6 | 101.6 | 100.3 | 100.0     | 100.9     | 100.2     | 103.9     | 99.5           | 100.1 | 96.0                 | 100.2 | 103.6   | 101.6   | 97.6            | 100.4 |
| 4        | 98.4  | 104.0  | 102.4 | 101.6 | 102.5 | 100.3 | 105.3 | 99.9  | 100.5     | 100.9     | 100.7     | 103.8     | 99.5           | 100.6 | 96.7                 | 100.8 | 104.8   | 102.3   | 97.7            | 100.8 |
| 5        | 98.7  | 104.0  | 102.4 | 101.6 | 102.9 | 103.8 | 101.5 | 104.5 | 100.6     | 101.0     | 100.9     | 103.9     | 99.5           | 100.8 | 97.6                 | 100.9 | 104.8   | 102.2   | 97.7            | 100.9 |
| 6        | 97.0  | 104.0  | 102.4 | 101.6 | 104.3 | 115.1 | 94.4  | 108.0 | 100.5     | 101.1     | 100.8     | 104.1     | 99.9           | 100.6 | 97.5                 | 100.7 | 104.8   | 101.3   | 97.7            | 100.7 |
| 7        | 98.7  | 103.0  | 102.4 | 101.6 | 96.1  | 102.9 | 88.6  | 101.4 | 100.5     | 101.8     | 100.5     | 104.1     | 100.0          | 100.7 | 97.3                 | 100.6 | 104.8   | 100.7   | 97.7            | 100.9 |
| 8        | 99.0  | 103.1  | 102.4 | 101.7 | 99.3  | 104.1 | 91.8  | 107.8 | 100.7     | 101.6     | 100.8     | 104.0     | 100.0          | 100.9 | 97.6                 | 100.8 | 104.8   | 102.5   | 96.1            | 101.0 |
| 9        | 99.3  | 103.2  | 102.4 | 101.7 | 105.3 | 113.4 | 102.9 | 96.5  | 100.6     | 101.7     | 101.0     | 104.4     | 100.2          | 100.8 | 97.7                 | 100.6 | 104.8   | 100.7   | 96.1            | 100.9 |
| 10       | 98.7  | 103.7  | 102.8 | 101.7 | 101.2 | 106.5 | 98.0  | 99.2  | 100.9     | 101.7     | 101.1     | 104.5     | 100.2          | 101.1 | 98.4                 | 101.0 | 104.8   | 102.1   | 96.1            | 101.1 |
| 11       | 98.2  | 103.8  | 102.8 | 101.7 | 107.8 | 105.5 | 111.8 | 102.8 | 100.9     | 101.6     | 101.4     | 104.4     | 100.1          | 101.1 | 99.8                 | 100.8 | 104.8   | 101.9   | 96.1            | 101.0 |
| 12       | 98.1  | 105.7  | 102.8 | 101.7 | 112.3 | 114.3 | 111.9 | 110.0 | 100.9     | 101.8     | 101.7     | 104.4     | 100.0          | 101.1 | 100.3                | 100.7 | 105.0   | 102.2   | 96.1            | 101.0 |
| 平成30年 1月 | 97.9  | 105.7  | 102.8 | 101.7 | 123.6 | 117.4 | 132.7 | 113.7 | 100.7     | 102.1     | 102.0     | 104.1     | 99.5           | 100.9 | 100.4                | 100.3 | 105.0   | 100.8   | 95.9            | 100.7 |
| 2        | 98.3  | 106.0  | 102.8 | 101.7 | 119.6 | 115.4 | 126.0 | 112.5 | 100.9     | 101.7     | 102.0     | 104.2     | 99.6           | 101.1 | 101.6                | 100.5 | 105.3   | 100.7   | 95.9            | 100.8 |
| 3        | 97.8  | 106.2  | 102.8 | 101.7 | 108.8 | 109.6 | 110.1 | 104.5 | 101.2     | 102.4     | 101.8     | 105.1     | 99.6           | 101.5 | 101.9                | 100.6 | 105.3   | 100.9   | 95.9            | 101.1 |
| 4        | 99.2  | 105.9  | 103.5 | 101.8 | 100.4 | 106.1 | 97.0  | 98.2  | 101.5     | 103.3     | 101.7     | 105.2     | 99.3           | 101.8 | 102.2                | 100.7 | 105.4   | 101.2   | 95.9            | 101.4 |
| 5        | 98.2  | 107.4  | 103.5 | 101.8 | 100.4 | 105.3 | 91.1  | 112.8 | 101.7     | 103.5     | 102.0     | 105.2     | 99.4           | 102.1 | 103.6                | 100.8 | 105.5   | 101.0   | 95.9            | 101.5 |
| 6        | 97.6  | 105.7  | 103.5 | 101.8 | 99.5  | 106.3 | 91.8  | 105.2 | 101.6     | 103.5     | 101.9     | 105.1     | 99.1           | 102.1 | 105.2                | 100.5 | 105.3   | 100.7   | 94.3            | 101.2 |
| 7        | 97.6  | 105.7  | 103.5 | 101.8 | 99.7  | 108.2 | 91.0  | 104.8 | 101.5     | 103.6     | 101.9     | 105.0     | 99.2           | 102.0 | 105.2                | 100.3 | 105.3   | 100.5   | 94.3            | 101.2 |
| 8        | 98.0  | 106.2  | 103.5 | 101.8 | 109.9 | 113.5 | 107.5 | 109.3 | 101.9     | 104.0     | 102.8     | 105.0     | 99.2           | 102.5 | 105.3                | 100.8 | 105.4   | 103.8   | 94.3            | 101.6 |
| 9        | 98.4  | 106.2  | 103.5 | 101.8 | 114.7 | 120.0 | 114.6 | 105.8 | 101.6     | 103.1     | 102.7     | 104.9     | 99.2           | 102.1 | 105.9                | 100.5 | 105.4   | 101.4   | 93.9            | 101.2 |
| 10       | 98.6  | 105.7  | 111.6 | 102.6 | 112.0 | 104.7 | 117.9 | 111.2 | 101.8     | 102.7     | 102.7     | 105.3     | 99.2           | 102.3 | 106.7                | 100.8 | 105.4   | 102.5   | 94.1            | 101.3 |
| 11       | 98.2  | 105.7  | 111.6 | 102.6 | 103.3 | 105.0 | 100.9 | 105.5 | 102.0     | 103.8     | 102.6     | 105.3     | 99.2           | 102.5 | 107.5                | 100.6 | 105.4   | 101.9   | 94.1            | 101.5 |
| 12       |       |        |       |       |       |       |       |       |           |           |           |           |                |       |                      |       |         |         |                 |       |
| 平成23年度平均 | 96.3  | 93.8   | 95.9  | 96.5  | 92.8  | 85.5  | 95.6  | 99.4  | 96.8      | 94.2      | 95.9      | 98.8      | 101.5          | 96.1  | 93.7                 | 98.1  | 95.3    | 97.6    | 101.0           | -     |
| 24       | 97.0  | 90.1   | 95.9  | 96.5  | 88.0  | 84.4  | 88.2  | 94.0  | 96.6      | 94.9      | 95.7      | 98.6      | 101.2          | 96.0  | 96.1                 | 97.3  | 95.4    | 95.6    | 100.0           | -     |
| 25       | 96.9  | 94.9   | 95.9  | 99.4  | 93.0  | 92.0  | 91.8  | 97.3  | 97.1      | 94.6      | 96.5      | 97.6      | 100.2          | 96.6  | 102.8                | 97.2  | 95.2    | 94.9    | 99.1            | -     |
| 26       | 98.6  | 98.8   | 100.0 | 102.5 | 95.7  | 100.6 | 92.8  | 93.2  | 99.8      | 98.8      | 99.5      | 98.7      | 100.3          | 99.7  | 106.1                | 99.3  | 98.4    | 99.0    | 100.4           | -     |
| 27       | 100.6 | 100.9  | 100.0 | 99.6  | 101.2 | 101.1 | 100.8 | 102.2 | 100.1     | 100.4     | 100.1     | 101.2     | 99.9           | 100.1 | 97.8                 | 100.2 | 100.7   | 100.3   | 100.0           | 100.3 |
| 28       | 98.6  | 103.7  | 101.7 | 101.1 | 106.3 | 102.3 | 109.6 | 105.6 | 100.1     | 101.0     | 100.4     | 103.1     | 99.6           | 100.1 | 92.9                 | 100.7 | 103.4   | 101.3   | 98.6            | 100.8 |
| 29       | 98.3  | 104.4  | 102.6 | 101.7 | 107.0 | 109.0 | 106.2 | 105.1 | 100.7     | 101.6     | 101.2     | 104.2     | 99.8           | 100.9 | 98.9                 | 100.7 | 104.9   | 101.5   | 96.6            | 100.9 |