

Make a note of your emergency assembly point,
nearby designated evacuation site, and evacuation site outside the UPZ.

Emergency assembly point () Nearby designated evacuation site () Evacuation site outside the UPZ ()

Emergency pack checklist As these are the same preparations you should make for a natural disaster, keep this pack ready at all times.

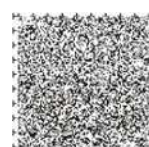
<input type="checkbox"/> Valuables  Cash, bankbook, personal seal, health insurance card, etc.	<input type="checkbox"/> Emergency provisions  Water, emergency food supplies	<input type="checkbox"/> Emergency medical supplies  Household medicines, your medical notebook, bandages, etc.	<input type="checkbox"/> Clothing, etc.  Change of clothes, towel, sanitary products, etc.	<input type="checkbox"/> Infant supplies  Diapers, powdered milk, baby bottle, etc.
<input type="checkbox"/> Portable radio, flashlight  Don't forget the batteries!	<input type="checkbox"/> Mobile phone  Don't forget the charger!	<input type="checkbox"/> Essential items for daily life  Glasses, dentures, hearing aid, etc.	<input type="checkbox"/> Items used when taking refuge  Mask, thermometer, disinfectant, handkerchief, outerwear, rucksack, hat, slippers, etc.	

○ Contact information for family and others

Name	Date of birth	Blood type	Illness / Medicine	Phone number	Memo

* Fill in using a permanent marker that won't rub out.

For inquiries about this pamphlet contact: _____



The Saga Prefecture Bureau of Crisis Management and Press, Crisis Management and Disaster Prevention Division
TEL:0952-25-7362 FAX:0952-25-7262

✉ kikikanribousai@pref.saga.lg.jp

Disaster Prevention Saga

Search



Copyright © 2024 Saga Prefecture. All Rights Reserved.

Don't Forget!

To residents within the UPZ
(approx. 5-30km radius away
from the nuclear plant)

Sheltering indoors during a nuclear disaster is the first step to staying safe



佐賀県
<https://www.pref.saga.lg.jp/>



In a nuclear disaster, it is important to stay calm and await correct information and instructions from public authorities.

Staying in the home, “Sheltering indoors,” is the first step to staying safe.*

* Going outdoors can greatly increase your risk of exposure if radioactive material is somehow released from the nuclear power plant.

* If everyone tries to evacuate far away all at once, this can lead to confusion and accidents, thus leading to increased risks.

Keep this booklet where it can be clearly seen.

