

Set to open in 2026!

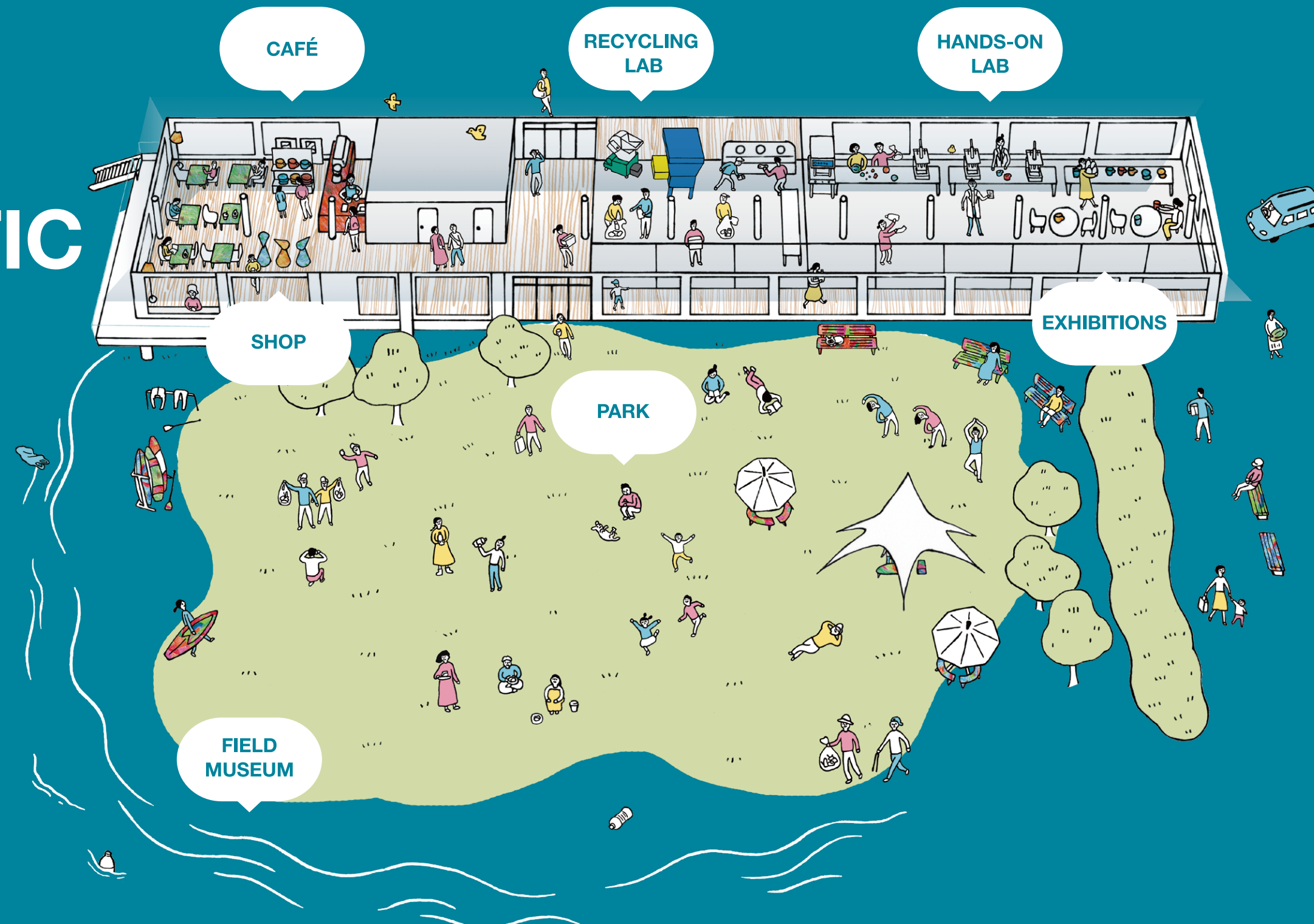
Field Museum of Sea and Land WORLD OCEAN PLASTIC PLANNING CENTER

A hub for thinking about, planning, and taking action to solve the global problem of ocean plastics. Please feel free to use the nickname “PLA PLA”

In the summer of 2026 (plan), a new center where visitors can learn about the ocean plastic problem and its solutions, from collection to recycling through hands-on experiences, will be established in the Genkai Sea region. Located within the planned Cape Hado Seaside Park, the facility will repurpose a 50-year-old existing rest area into a café and shop, while with locally sourced timber constructing a wooden laboratory for hands-on learning and recycling. The center will feature a roof and exterior walls made from upcycled ocean plastic materials. It also aims to become the first public facility in the prefecture to achieve 'ZEB' (Zero-Energy Building) certification. Here, people will gather, experience, reflect on, and gain insights for a sustainable future. Let's start with what each of us can do!



- ① Exterior: A center located in a seaside park with a panoramic view of the Genkai Sea and surrounding islands.
- ② Café: A space designed with upcycled ocean plastic materials.
- ③ Semi-outdoor Approach: A distinctive roof made from panels of recycled ocean plastic.



Collecting and recycling of ocean plastics

With the cooperation of volunteers, fishermen, companies, organizing activities for schools and using collection bins, we retrieve ocean plastics from nature. Utilizing new and modern recycling technology provided by private companies, we can upcycle and create further value from them.

Education, Exhibitions, Research

The lab allows visitors to observe the process of ocean plastics being recycled. Through panel and video exhibits, and collaboration with various universities and companies we will provide and share the latest information on ocean plastic research.

A café to connect with the local community.

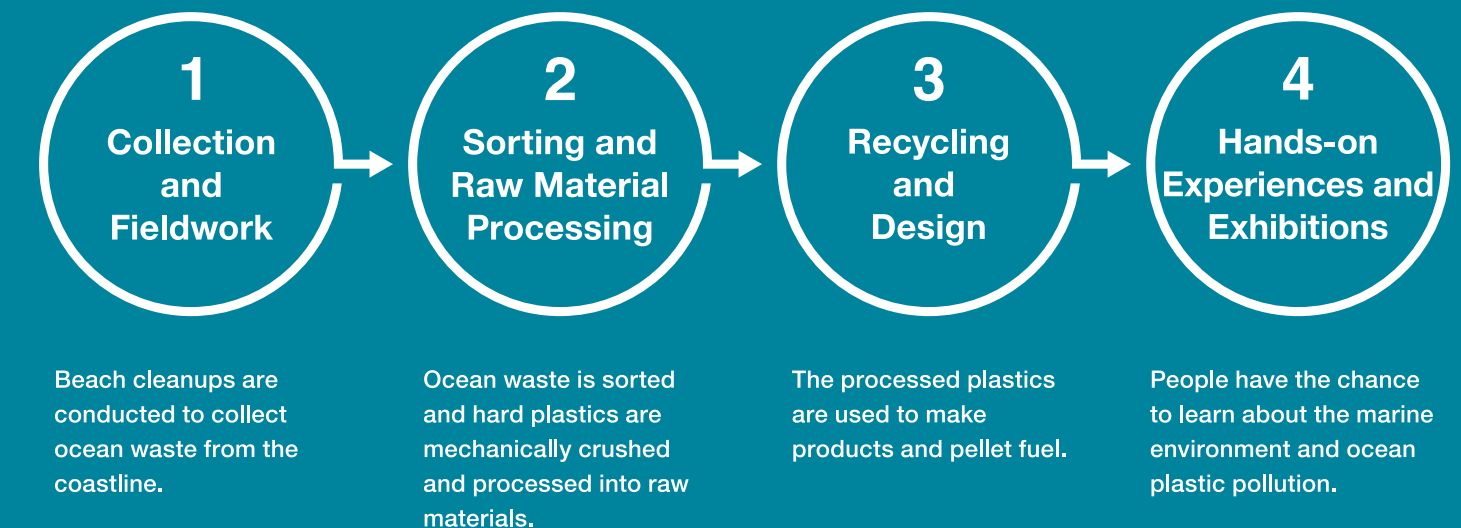
The shop offers products made from upcycled ocean plastics, and the café food and beverages are made using local ingredients. The café aims to be a community hub, a public meeting place, where both locals and visitors can gather and connect.

International Outreach

By sharing the issues of ocean plastic we face in the Karatsu Genkai area and the initiatives Saga Prefecture has to combat them with the world, we will foster connections with domestic and international stakeholders to encourage cooperation for a sustainable future.

Introducing regional initiatives

Saga faces both the inland sea - the Ariake Sea - and the Tsushima Strait - the Genkai Sea, and life in Saga is filled with familiar nature such as mountains and rivers. The “Morikawakaito” Project was born in this environment, with a philosophy of “connecting to the future, viewing forests, rivers and the sea as one.” The project aims to create opportunities for people to learn about and directly experience the environment, building networks of individuals and groups who actively work for and with forests, rivers, and seas. We have been working together with locals for example by organizing beach cleanups and setting up collection bins for ocean waste.

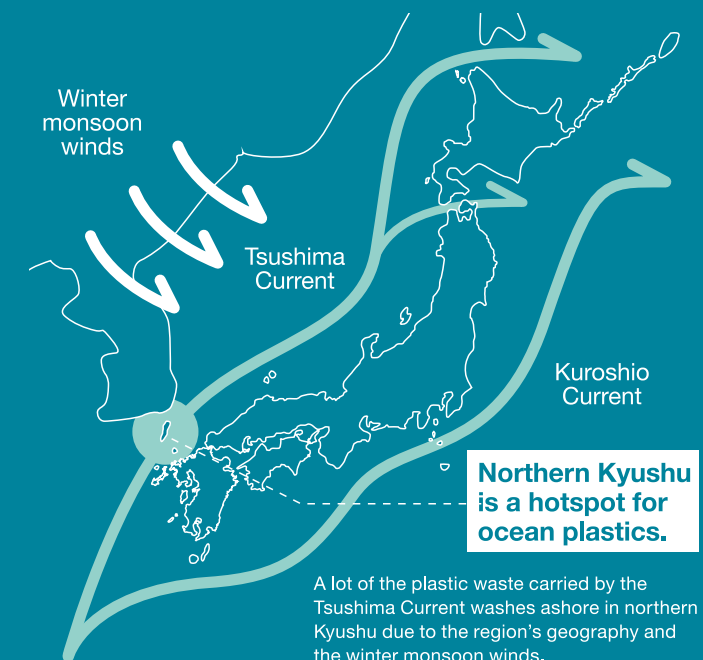


Restore the world's oceans from the cape of Saga.

Plastic - inexpensive, durable, and indispensable - supports our modern life. However, improper disposal has created the issue of ocean plastic pollution. Saga Prefecture, located in the northern part of Kyushu Island, is a hotspot for marine debris. As a gateway to continental Asia, Saga aims to create new trends and build networks with the numerous regions and countries who share the ocean plastic problem. Saga Prefecture has extended efforts to reexamine the connection between people and nature, and is disposed to face this challenge. From Saga we will create a vision which contributes to the SDGs and connects to the future of the ocean.



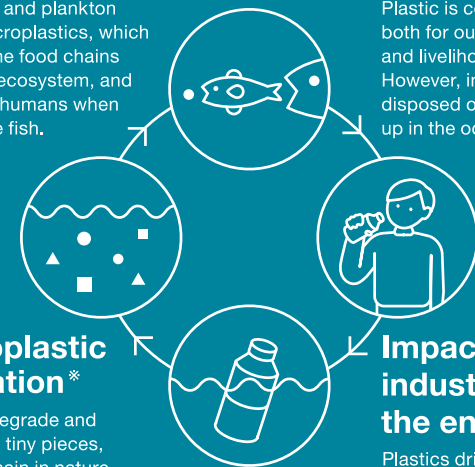
Ocean currents and the situation in northern Kyushu



What is the ocean plastic problem?

Impact on ecosystems

Small fish and plankton ingest microplastics, which through the food chains enter the ecosystem, and end up in humans when we eat the fish.



Microplastic formation*

Plastics degrade and break into tiny pieces, which remain in nature for hundreds of years without decomposing.

*Tiny plastic particles less than 5mm in size.

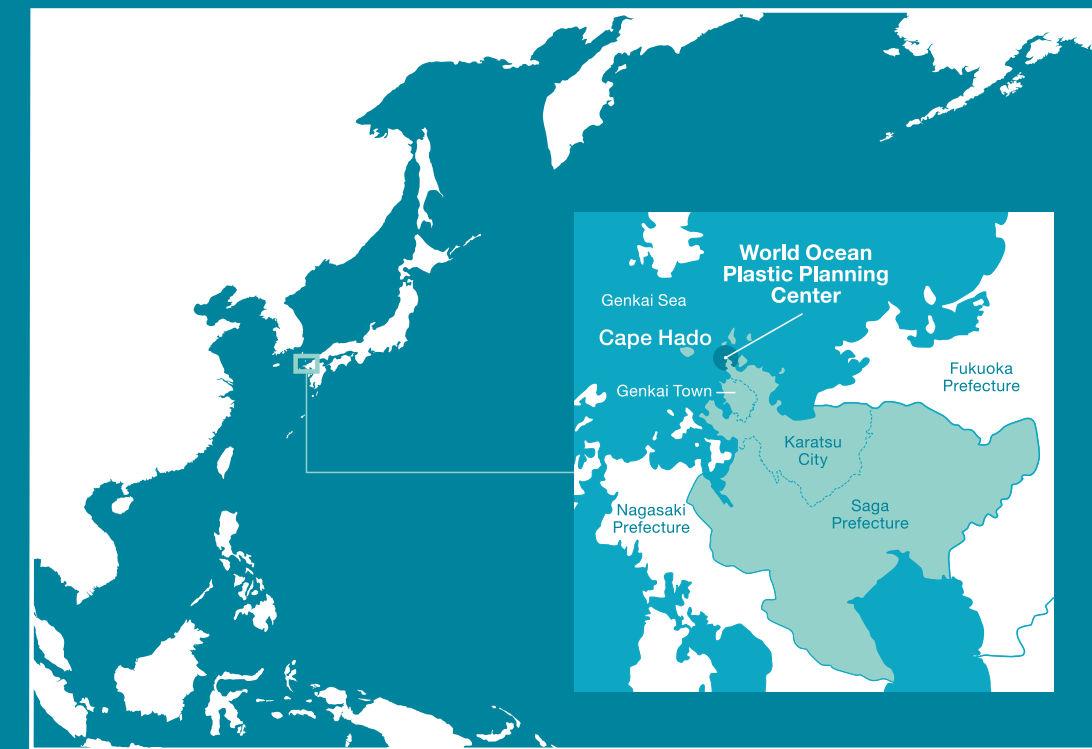
Life with plastics

Plastic is convenient both for our daily lives and livelihoods. However, improperly disposed of, they end up in the oceans.

Impact on industry and the environment

Plastics drift in the sea for years, affecting birds, sea turtles, fisheries, tourism, and coastal living environments.

Current situation



Saga Prefecture, Department of Environmental Affairs, Decarbonized Society Promotion Division
1-1-59 Jonai, Saga City, Saga Prefecture 840-8570, TEL 0952-25-7079, MAIL datsutansosuishin@pref.saga.lg.jp
2025.3.1 Second Edition This leaflet is printed on recycled paper.

WORLD OCEAN PLASTIC PLANNING CENTER

Concept of the World Ocean Plastic Planning Center
“PLA PLA”